



Suffolk Avenue  
Leigh On Sea, SS9 3HF  
**£1,195 PCM**





## Suffolk Avenue

Leigh On Sea, SS9 3HF

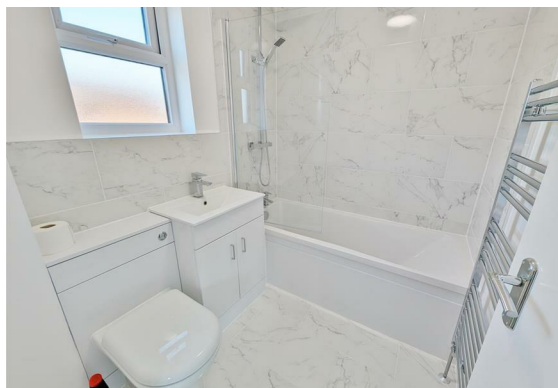
Nestled in the charming location of Suffolk Avenue, Leigh On Sea, this delightful one-bedroom first-floor apartment presents an ideal opportunity for those seeking a modern and comfortable living space. Recently fully refurbished, the property boasts a spacious open-plan lounge and kitchen, perfect for both relaxation and entertaining.

The apartment features a well-appointed bathroom and a generously sized double bedroom, ensuring a cosy retreat at the end of the day. Additionally, the property benefits from the convenience of driveway parking for one vehicle, a garage, and a lovely detached garden to the side, enhancing the overall appeal of this home.

This apartment is an absolutely perfect starter home for a couple or single person, offering a blend of contemporary living and practical amenities in a picturesque setting. With its thoughtful design and prime location, this property is sure to attract those looking to establish their first home in a vibrant community. Don't miss the chance to make this charming apartment your own.

Stairs Leading Upstairs

Lounge/Diner  
16'0 x 9'05 (4.88m x 2.87m)







Bedroom  
14'02 x 8'04 (4.32m x 2.54m)

Bathroom  
6'09 x 5'07 (2.06m x 1.70m)

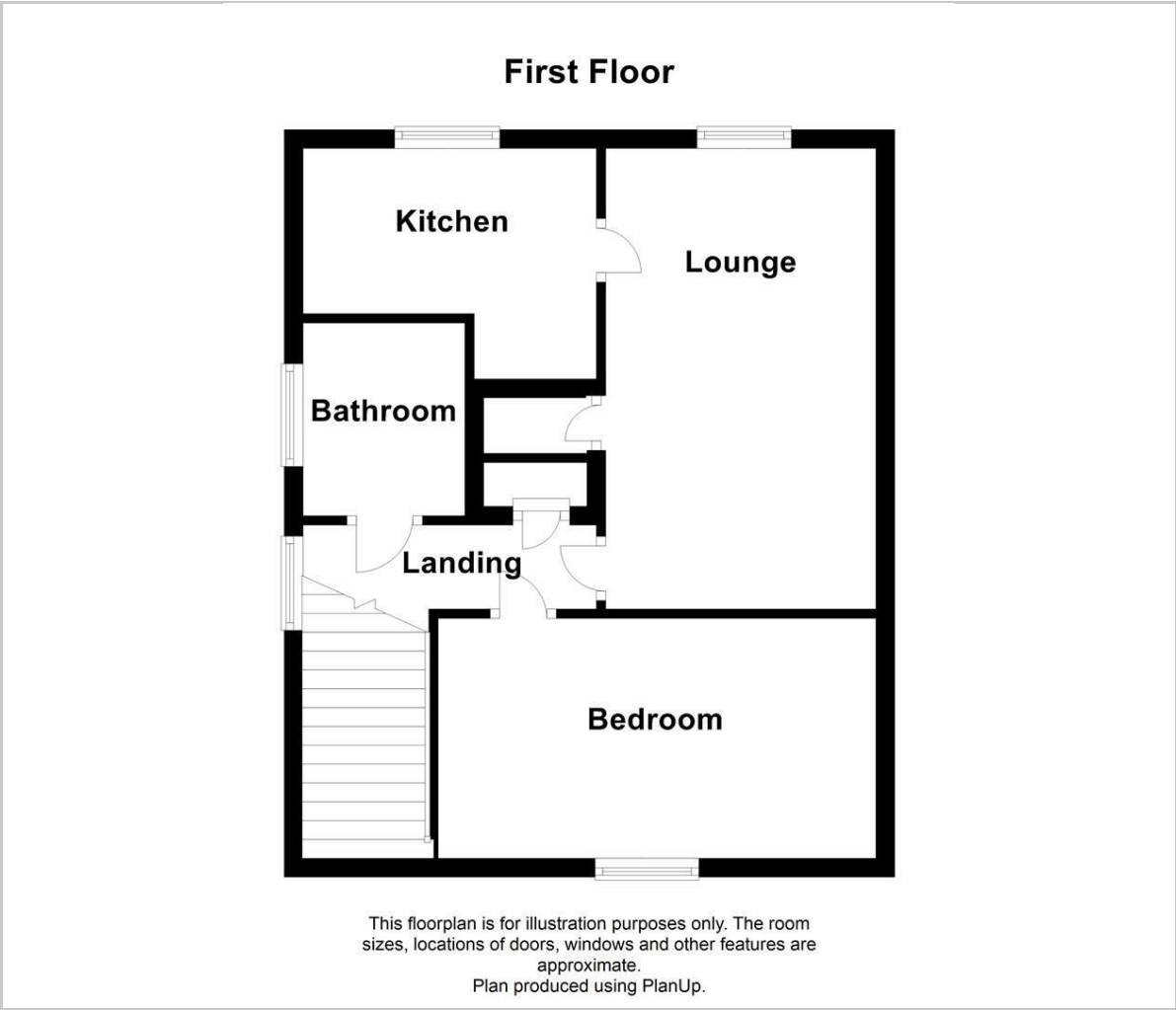
Kitchen  
7'11 x 6'0 (2.41m x 1.83m)

Garage

Parking

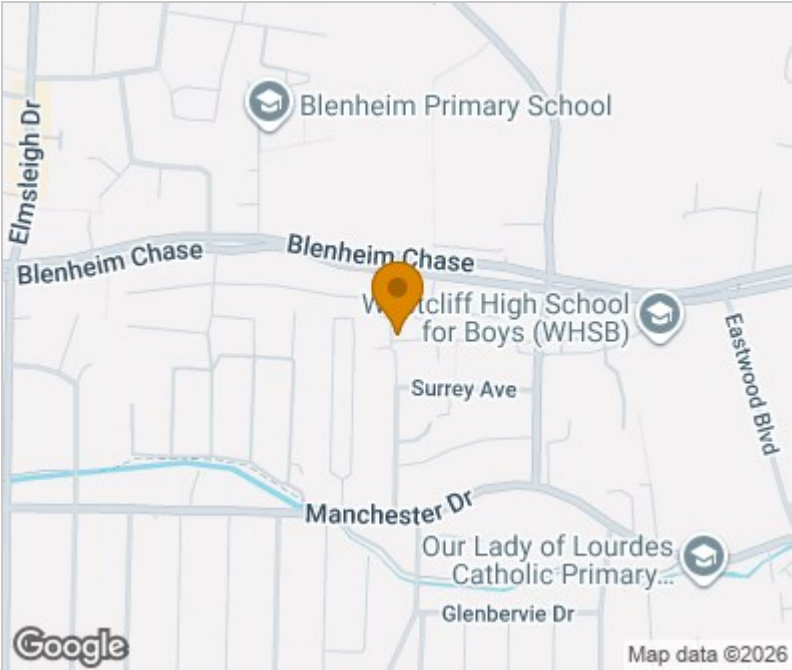
Garden

Floor Plan

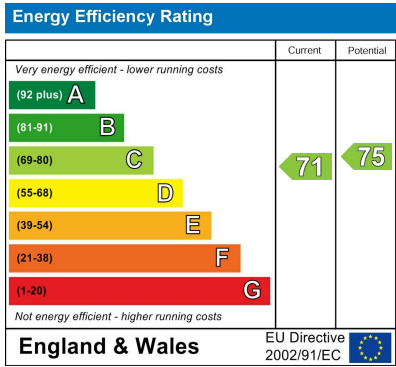


Please contact our office on 01702710555 if you wish to arrange a viewing appointment for this property or require further information.

Area Map



Energy Efficiency Graph



These particulars, whilst believed to be accurate are set out as a general outline only for guidance and do not constitute any part of an offer or contract. Intending purchasers should not rely on them as statements of representation of fact, but must satisfy themselves by inspection or otherwise as to their accuracy. No person in this firm's employment has the authority to make or give any representation or warranty in respect of the property.